



inspirational surfaces

**BB** omega

# welcome to Bushboard

We have been developing kitchen and bathroom surfaces in the UK since 1935 and the idea that everyone deserves great design whatever their budget underpins our entire approach to surfacing.

When you buy a Bushboard product you are buying into our ethos of exceptional quality, exquisite design and excellent value and of course, first class customer care.

We want to ensure you get the very best from your new worksurfaces so our products carry a lifetime guarantee as well as a unique installation guarantee so you can be sure your Omega worksurface will look sensational for years to come.

Front cover: Ice Stone worksurface and upstand with Q3 profile in fusion texture.



great choice of  
33 designs



lifetime product  
guarantee



3 year joint  
guarantee

when installed with  
BB Complete Adhesive

# welcome to Omega

We've built our reputation on laminate and love this incredibly versatile material. Durable, affordable and with an amazing choice of textures and designs it's no wonder it's at the heart of our collection.

This Omega range of stunning laminate designs truly reflects the Bushboard ethos of bringing smart surfaces and clever ideas to our customers.

Over the following pages you will find design upon design brought to life in our inspirational collection of Omega worksurfaces, splashbacks and upstands.



crisp Q3 or square edged profiles



22mm slimline thickness





# echoes of nature

Our collection of stones, granites and marbles make a luxury statement in any kitchen. These distinctive designs are printed in life-like proportions to truly echo nature.

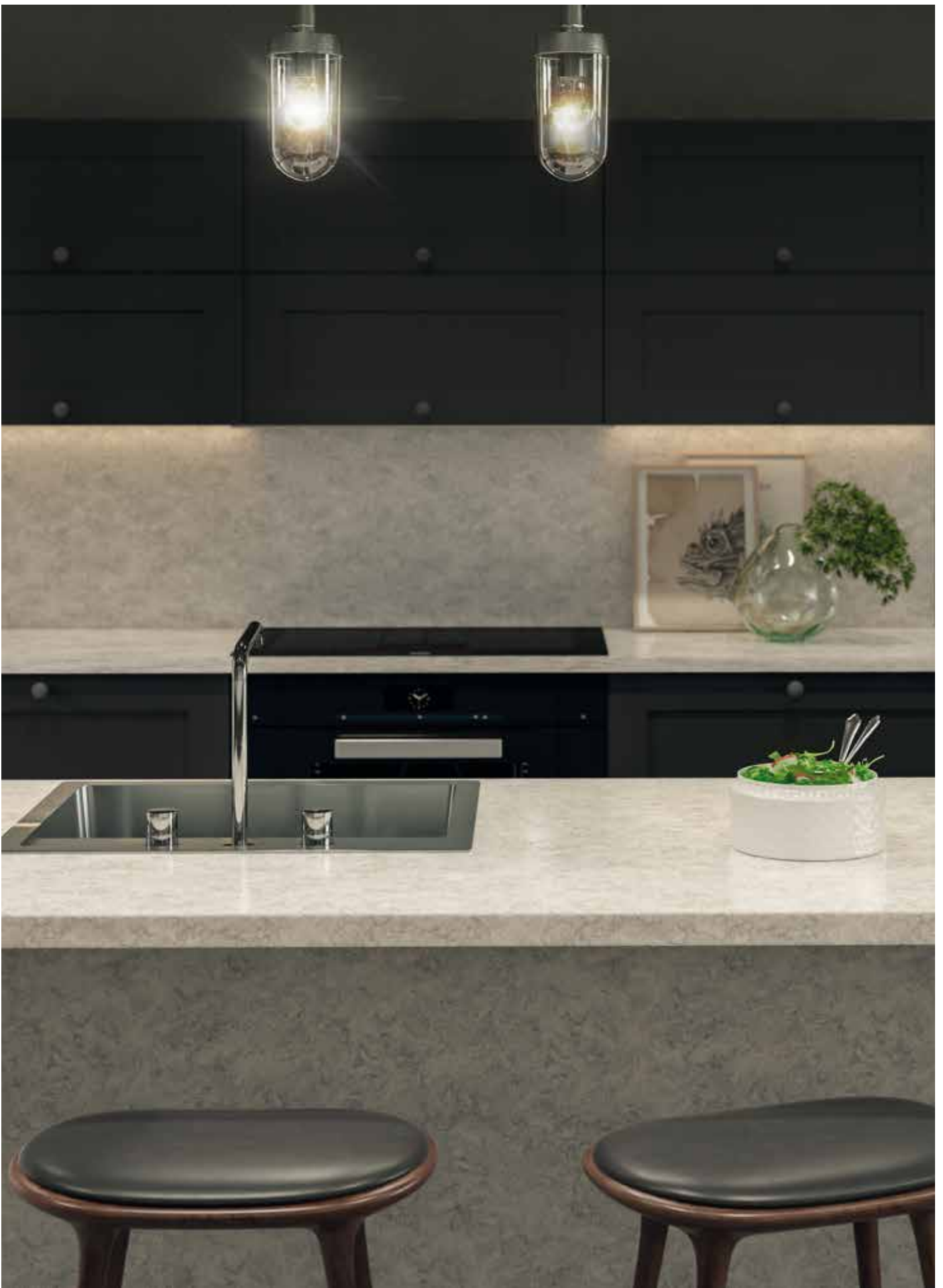
Elegant and exuberant they combine beautifully with traditional hand painted or sleek handleless doors. Run the design through worksurface and splashback to outstanding effect.

Starting with our statement stones see how the collection mirrors perfectly the beauty of nature allowing you to create a distinctly top-end look. They truly are affordable luxury.

## **BB** get the look

Here we've teamed our Pescara worksurface, splashback and breakfast bar with classic black doors to create a simple but stunning contrast.

Worksurface, splashback and breakfast bar:  
Pescara, all in glaze texture.  
38mm with Q3 profile



# modern minerals

We have utilised the latest innovation in surface technology and design to bring you a unique, slimline laminate worksurface that genuinely reflects the natural beauty of highly polished stone.

Our eye-catching, higloss surfaces are truly aspirational as an affordable alternative to real quartz.

Available in four colourways with a sharp 22mm square edge, these surfaces will make a statement in any home.

**22mm  
Square edge**  
worksurface in  
4 colourways

Pictured right: 22mm Square edge Brasilia Quartz worksurface in higloss texture.



**White Quartz** higloss



**Vanilla Quartz** higloss



**Black Quartz** higloss



**Brasilia Quartz** higloss





# the leading edge

True square edge worksurfaces provide a chic and ultra-modern look, adding luxury to the most hardworking of interior spaces.

Pictured right: 38mm Square edge Soft Mazzarino curved breakfast bar, worksurface and upstand, all in quarry texture.

(A curved breakfast bar has been cut to suit the configuration).

**38mm  
Square edge**  
worksurface  
and breakfast  
bar in 6  
designs



# urban neutrals

This brand new selection of surfaces has been specifically developed to reflect current trends in home design. Over the following pages you will see how the modern, muted tones can deliver an understated contemporary look and feel.

Pictured detail: Urban Volcan worksurface with Q3 profile in fusion texture.





Urban Stone worksurface and breakfast bar with Q3 profile and splashback, all in fusion texture.



14 Calacatta Statuario worksurface, breakfast bar and slab end with Q3 profile and splashback, all in glaze texture. Additional breakfast bars used as back panel and slab ends.









Urban Concrete worksurface with Q3 profile in roche texture and Graphite Oak splashback in ultramatt texture.

# natural appeal

The Omega collection celebrates the appealing look and character of natural woodgrains. These ever-popular designs have evolved offering rich colour, unique grain patterns and sympathetic texture overlays to deliver a range that is more realistic than ever before.

Take our brand new Stamford Oak, pictured right, brought to life in an ultra-modern, stylish and on-trend kitchen setting.

Our new collection has something for everyone!

Pictured right: Stamford Oak square edge worksurface and splashback in ultramatt texture.



**Antique Block Walnut** ultramatt



**Black Oak** ultramatt



**Pitch Pine** ultramatt



**Stamford Oak** ultramatt



**Graphite Oak** ultramatt

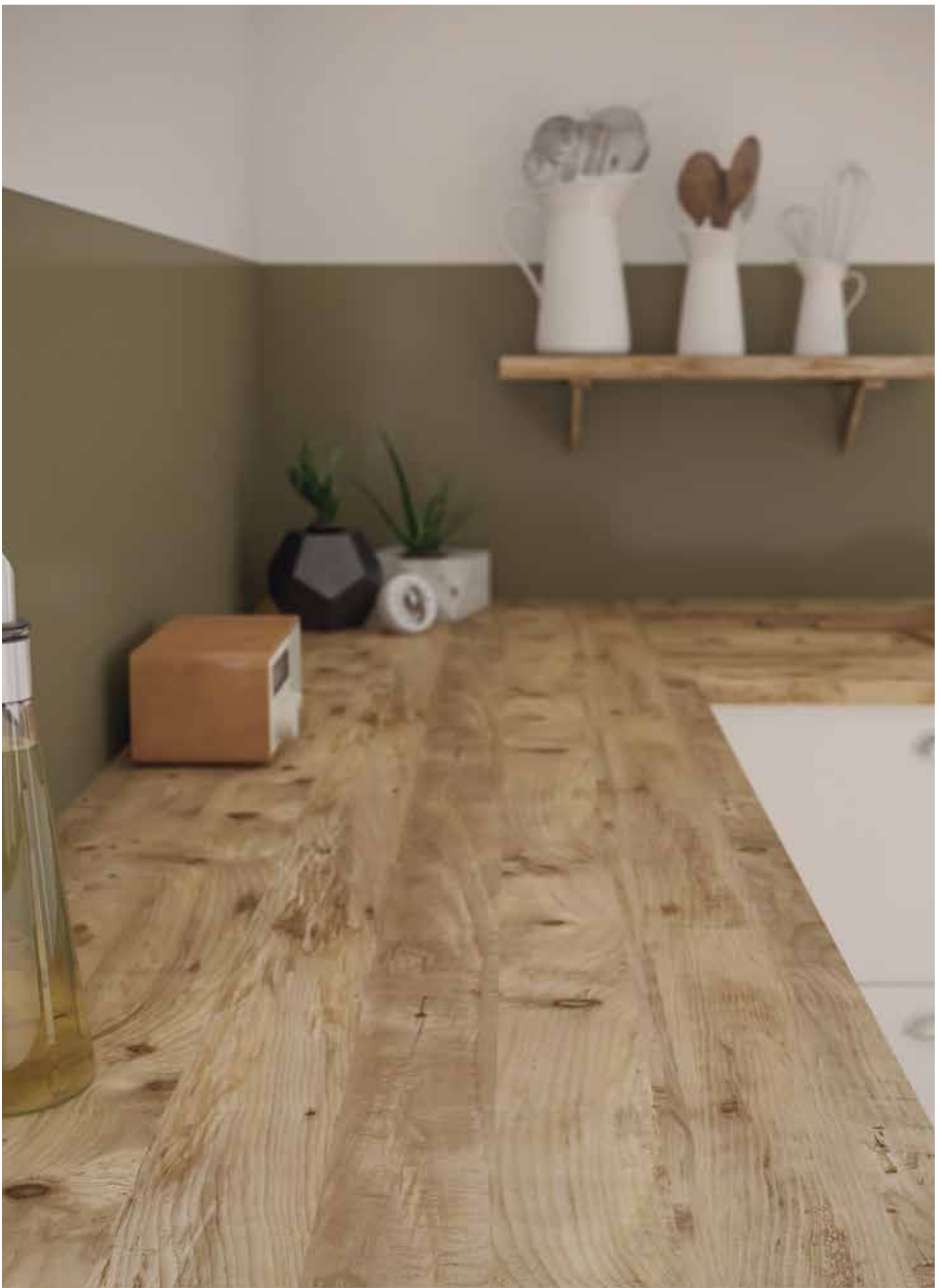




20 Black Oak worksurface and breakfast bar with Q3 profile and splashback, all in ultramatt texture.







Pitch Pine worksurface with Q3 profile in ultramatt texture.

# real innovation

We are always striving to bring you smart surfaces developed through clever ideas and our latest woodgrain innovation is no exception.

The beauty of a woodgrain surface is its character. Each individual species has its own unique features. These distinctive markings have been cleverly recreated and combined with true-to-life texture overlays and our brand new realistic end-grain detail to deliver a laminate surface that has all the richness and depth of real wood without any on-going maintenance.

We have carefully selected three key designs to be enhanced by this new feature comprising Graphite Oak, Stamford Oak and Natural Blocked Oak.

Don't forget to order your end-grain edging to complete this stylish new look. Refer to our matrix on page 35 for availability.



**Graphite Oak** end-grain edge detail





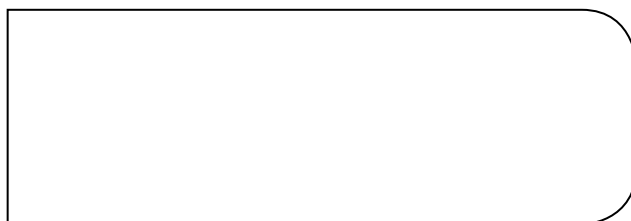
**Stamford Oak** end-grain edge detail

# shape your look

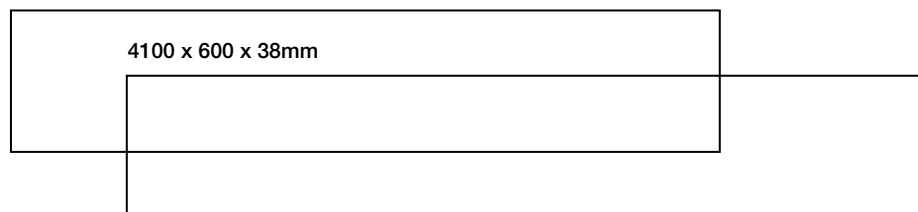
Everyone thinks of laminate worksurfaces in straight lines but Omega offers a range of ready-made curved components. These give you the freedom to shape your kitchen to suit your look and your lifestyle, without the expense of specialist fabrication.

The large breakfast bar features a modern double curved end which is ideal for creating an island unit around which to perch for a chat, coffee or a snack. Or it can be installed as a low table for informal kitchen suppers or the kids' homework.

**3000 x 900 x 38mm breakfast bar with curved end  
263mm radius curves**



**3600 x 600 x 38mm**



**Stamford Oak** ultramatt



**Graphite Oak** ultramatt



**Lima surf**



**Natural Blocked Oak** ultramatt



**Soft Mazzarino** quarry



**Aged mazzarino** glaze



## BB get the look

Here we've used our 38mm square edge breakfast bar to give the authentic look of real wood with minimal effort

Breakfast Bar: Graphite Oak in ultramatt texture. 38mm PP square edge with brand new end-grain detail.

# smart splashbacks

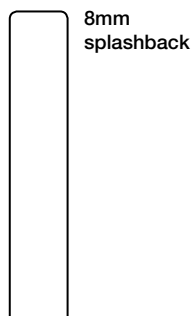
Why stop at laminate for your worksurface?  
This versatile material works equally well as a splashback and it's such a smart choice in place of wall tiles.

Affordable, hygienic and still looking fabulous in years to come, we have a stunning range to match your worksurface.

With quartz, woodgrains and stones, there is an abundance of choice so take a look.

Little maintenance is required, a quick wipe down with a damp cloth is all the cleaning needed.

Pictured right: Urban Stone worksurface with Q3 profile and splashback in fusion texture.





# finishing touches

It's the small details that make the difference.

That's why our entire range has a matching upstand to add an elegant and co-ordinated finish to your new kitchen design. The same neat profile completes the look and all is sealed in place with our BB Complete coloured adhesive for an impeccable finish!

Pictured detail: Black Quartz worksurface and upstand with Q3 profile in high gloss texture.

**Q3  
upstand**  
in all worksurface  
designs

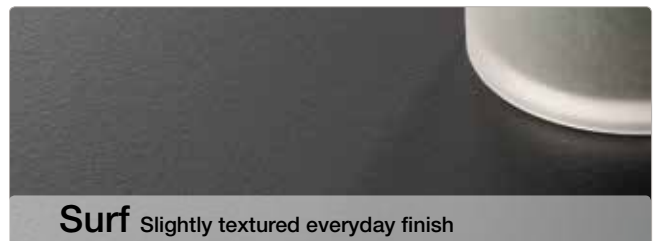
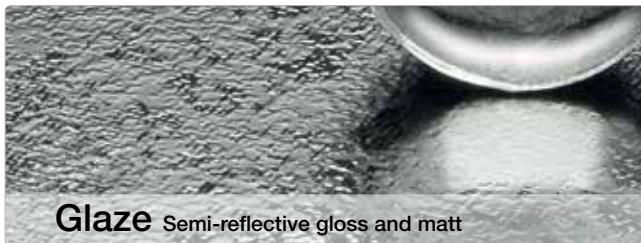


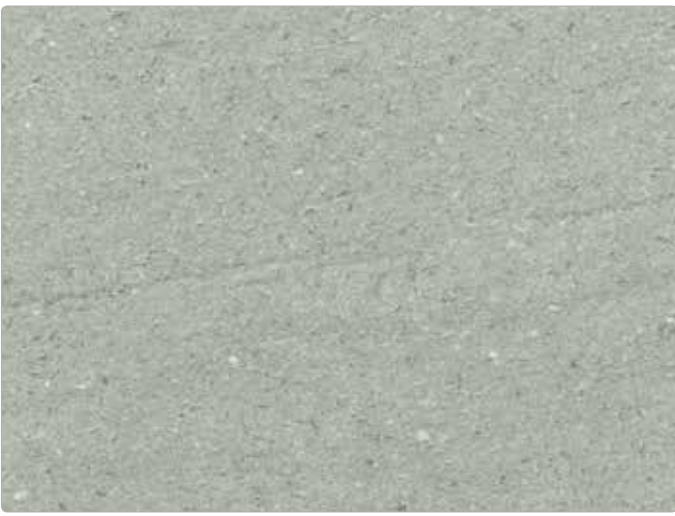
# a guide to texture

Marrying the right texture with the right design is a skill in itself and brings a design to life. We've worked with eight textures across our range to do just that.

This quick guide helps you see our textures in more detail and look at the matrix on page 35 to see which texture your chosen worksurface is available in.

Our speedy sample service means you can see the final result for yourself.





**Urban Concrete** roche



**Ice Stone** fusion



**Calacatta Statuario** glaze



**Urban Stone** fusion



**Urban Volcan** fusion



**Natural Greystone** roche



**Antique Paladina** Glaze



**Granite Bianco** fusion



**Soft Mazarino** quarry



**Aged Mazarino** glaze





**Graphite Oak** ultramatt



**Pitch Pine** Ultramatt



**Butcher Block Medium** fa



**Light Blocked Walnut** fa



**Stamford Oak** ultramatt



**Antique Block Walnut** ultramatt



**Natural Blocked Oak** ultramatt



**Black Oak** Ultramatt



**Turin Marble** Ultramatt



**Silver Pebblestone** surf



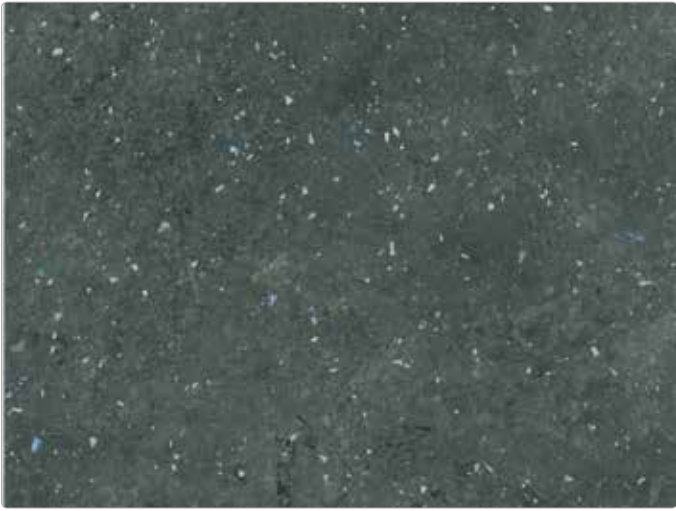
**Pescara** Glaze



**White Quartz** higloss



**Black Quartz** higloss



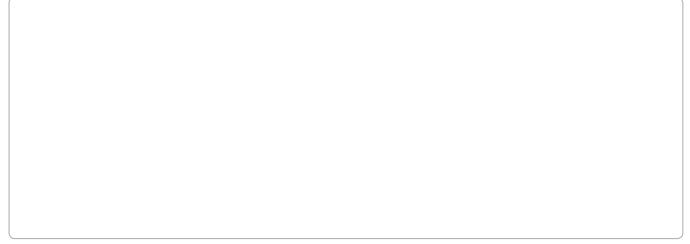
**Brasilia Quartz** higloss



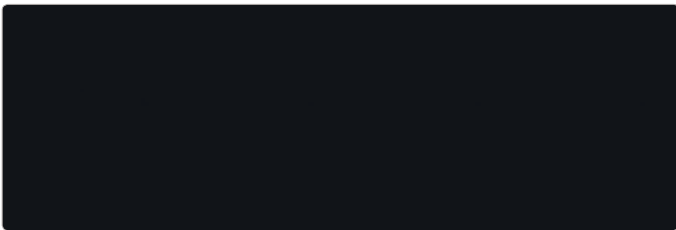
**Vanilla Quartz** higloss



**Lima** higloss | surf



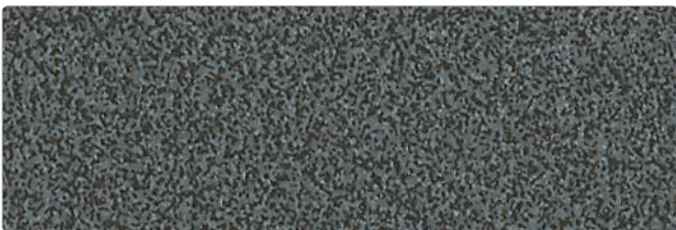
**Pure White** surf



**Noir** surf



**Gris Paloma** fa



**Maryland Fonce** surf



**Baltic Granite** higloss



**Aticos Gold** surf

ref.	design	texture	adhesive colour	BB complete impregnation worktop (on-line adhesive) Coloured adhesive																	
				3000 x 600 x 38mm worksurface	3000 x 900 x 38mm breakfast bar	3600 x 600 x 38mm worksurface	3600 x 900 x 38mm breakfast bar	4100 x 600 x 38mm worksurface	4100 x 665 x 38mm breakfast bar	4100 x 900 x 38mm breakfast bar	3600 x 600 x 38mm worksurface	3600 x 900 x 38mm curved breakfast bar	4100 x 600 x 38mm worksurface	3000 x 900 x 38mm curved breakfast bar	4100 x 600 x 22mm worksurface	3000 x 900 x 22mm curved breakfast bar	4200 x 48mm edge	4200 x 28mm edge	4200 x 43mm end-grain edge	3000 x 600 x 8mm midway panel	1500 x 1200 x 8mm hob panel
F070	Vanilla Quartz	higloss	vanilla																		
F074	Black Quartz	higloss	jet black																		
F075	White Quartz	higloss	ice white																		
F085	Brasilia Quartz	higloss	basalt grey																		
N059	Natural Blocked Oak	ultramatt	oatmeal																		
L032	Lima	surf	jet black																		
C165	Graphite Oak	ultramatt	mushroom																		
C148	Stamford Oak	ultramatt	oatmeal																		
M003	Maryland Fonce	surf	basalt grey																		
A017	Antique Block Walnut	ultramatt	chestnut																		
B066	Baltic Granite	higloss	chocolate																		
L032	Lima	higloss	jet black																		
A024	Aticos Gold	surf	ivory																		
N005	Noir	surf	jet black																		
S101	Silver Pebblestone	surf	silver grey																		
B050	Butcher Block Medium	fa	toffee																		
L011	Light Blocked Walnut	fa	toffee																		
R050	Natural Greystone	roche	pewter grey																		
B068	Pure White	surf	ice white																		
R100	Urban Concrete	roche	pewter grey																		
M123	Ice Stone	fusion	silver grey																		
T104	Urban Volcan	fusion	mushroom																		
T100	Urban Stone	fusion	pewter grey																		
G113	Granite Bianco	fusion	pewter grey																		
T091	Turin Marble	ultramatt	silver grey																		
B190	Black Oak	ultramatt	mushroom																		
P129	Pitch Pine	ultramatt	fudge																		
13073	Soft Mazzarino	quarry	fudge																		
1874	Aged Mazzarino	glaze	mushroom																		
13075	Calacatta Statuario	glaze	silver grey																		
13078	Antique Paladina	glaze	chocolate																		
4954	Pescara	glaze	silver grey																		
149	Gris Paloma	Fa	silver grey																		

• To order



Pitch Pine worksurface and upstand with Q3 profile in ultramatt texture.

# here to help

Choosing a new kitchen is an exciting time and we have all the tools you need.

With Bushboard it's so easy.



# what to do next!

order brochures | order free samples  
find inspiration for your home

[www.bushboard.co.uk](http://www.bushboard.co.uk)



## Sampling

Every year thousands of customers use our sampling service to help them plan their kitchen worksurface scheme.

Your retailer can request these for you or you can order them directly.

In fact, to make it really easy, we will send you up to six of your favourite designs, free of charge, delivered direct to your door.

[www.bushboard.co.uk](http://www.bushboard.co.uk)



## Customer Support Team

Need to talk?

Our Customer Support Team is here to help.

**0044 1933 232 272**  
[help@bushboard.co.uk](mailto:help@bushboard.co.uk)

 [@bushboard](https://twitter.com/bushboard)

 [facebook.com/  
bushboard](https://facebook.com/bushboard)

 [@bushboard](https://www.instagram.com/bushboard)

 [Bushboard](https://www.pinterest.com/Bushboard)

# more great reasons

## **BB complete** The professional worktop jointing adhesive

### **Exclusive 3 year joint guarantee**

We know the importance of the final installation, that's why we've developed BB Complete, our bespoke adhesive and sealant which should be used by your installer when your Omega worksurface is fitted.

It offers superb performance at modest cost and allows your installer to joint, bond and seal your worksurface, upstand and splashback and is backed by our exclusive 3 year guarantee on joints.

The wide choice of colours available will give you an option to suit your surface.

Always use BB Complete for peace of mind. Full joint guarantee details are available on our website or from the Customer Support Team.

Our Customer Support Team can offer advice on installing and looking after your Omega worksurface. Our Installation, Care & Maintenance leaflet is included in every worksurface and is also available from our website.



Jet Black

Basalt Grey

Pewter Grey

Silver Grey

Ice White

Ivory

Vanilla

Oatmeal

Toffee

Fudge

Mushroom

Chestnut

Chocolate

# to buy Bushboard

At Bushboard we're passionate about everything we do and we're always here to help.

We invest heavily in high quality manufacturing and work with the best materials and suppliers. Our values of partnership, loyalty and an ethical approach mean we do what's right; that's why we've been around since the 1930s.

Even after Bushboard products arrive in your home we strive to assure a quality installation. Our BB Complete adhesive and sealant range is designed to make the installer's life easier and assure a quality long-lasting installation for you.

## Quality

Manufacturing with the finest materials is what gives Bushboard worksurfaces their signature quality. While beautiful and stylish to look at, they are also constructed to cope with the wear and tear of everyday living. Independently tested to BS/EN438, your Bushboard worksurface is designed to withstand knocks, abrasions, chemicals, cigarette burns, steam, stains from juice, tea, wine or coffee. It is also highly resistant to heat, although we recommend the use of a protective pad as saucepan bottoms can become extremely hot.

Bushboard select E1 grade high-density particleboard for strength and stability. It's homogenous construction generates excellent machining capability for sink cut-outs and mitre joints. Omega worksurfaces are designed to perform below the surface too; a resin impregnated moisture resistant barrier combines with Bushboard's unique 'Tekseal' cast resin drip-edge to completely seal the underside against moisture penetration from everyday spills. However, it is really important that spills are mopped up immediately to reduce unnecessary damage.

## Care & Maintenance

Bushboard worksurfaces are so easy to maintain. On a day-to-day basis all you need to do is wipe them down with a moist cloth and your favourite mild detergent. For more stubborn marks such as fruit juice and coffee, leave the detergent to soak on the surface for a little while before rinsing thoroughly. Obviously, your worksurface can become damaged if mistreated, so we recommend some sensible measures like placing hot pans or casserole dishes on protective mats and mopping up spills quickly. As with any laminate worksurface, you should avoid chopping, cutting or placing hot items directly on to the surface.

## Textures

Premium textures need a little more care and attention. Please remember they are fashionable finishes and tend to show marks and scratches more easily with everyday use. This is also true of darker, plainer and matt finishes.



Bushboard worksurfaces are guaranteed for their lifetime. Bushboard will make good by repair and/or replacement (at its discretion) any Omega product of its manufacture which can be shown to have failed by reason of defects in its manufacture, subject to fair wear and tear, provided the product has been installed and used in accordance with the manufacturer's instructions and that the products are used for their intended purpose. Proof of date and place of purchase required. This guarantee is in addition to your statutory rights as a consumer and does not affect your rights in any way.



The Furniture Industry Research Association has awarded Omega the Gold Certificate in recognition of its excellent manufacturing standards.

[www.bushboard.co.uk](http://www.bushboard.co.uk)


tel: 0044 1933 232 242

email: [help@bushboard.co.uk](mailto:help@bushboard.co.uk)

 @bushboard

 [www.facebook.com/bushboard](http://www.facebook.com/bushboard)

 @bushboard

 Bushboard

Bushboard Ltd  
9-29 Rixon Road  
Wellingborough  
Northants  
NN8 4BA  
UK

## Back cover picture: Granite Bianco worksurface with Q3 profile in fusion texture

The company reserves the right to change specifications at any time, without notice. Every effort has been made to achieve faithful representations of our products in this brochure, but due to printing limitations we recommend that samples of actual material are requested before purchasing.

