

# OMEGA

KITCHEN SURFACES



EB

BUSHBOARD

A WILSONART COMPANY



# A very modern **OMEGA** finish adds a touch of luxury and a dash of personality to your kitchen.

---

The **OMEGA** range is inspired by the latest interior kitchen trends using intelligent designs and innovative Bushboard thinking.

Our market-leading range contains material, colour and texture choices which all take laminate worksurfaces to a new level. With an array of worktop thicknesses and profile options, alongside matching splashbacks and upstands, **OMEGA** is the premier laminate worksurface choice for any kitchen.

**Beautifully Designed, Made to Last**



**OMEGA**

# BENEFITS

# OMEGA



## RANGE OF THICKNESSES

38mm has long been the standard thickness for any kitchen worksurface but now a selection of our most stylish decors are also available in an uber-modern 22mm thickness.

## MATCHING SPLASHBACK

All decors are available as a splashback and upstand. This means you can have a perfectly matching worktop and splashback or, as shown, create a stunning contrast.

## COST

Unlike real material, such as wood, stone or granite, laminate worksurfaces are the cost effective way to update your kitchen with realistic designs and textures.

## QUALITY

At Bushboard we invest heavily in the best equipment and processes. Our laminate worksurfaces are tested to ensure high quality performance and durability.

## HYGIENIC

**OMEGA** worksurfaces are incredibly easy to clean and offer unique antibacterial surface protection built into the laminate surface itself. Unlike wood, Laminate will not go mouldy and requires little maintenance.

## PROFILES

The **OMEGA** collection offers two profiles, square edge, as shown here, which gives a clean, modern look or postformed, which offers a beautiful curved edge.

## CHOICE

The **OMEGA** collection offers versatility in our offering. Most of our decors are available in either a postformed or square edge finish and are available in 3 and 4m sizes.

## GUARANTEE

Bushboard **OMEGA** worksurfaces are guaranteed for their lifetime, giving you a peace of mind with your new kitchen. For full details see page 52.

# OUR COLLECTIONS

# OMEGA



## WOOD

Page: **10**

**OMEGA** Wood offers all the beauty and texture of stunning natural wood, but with none of the hassle of maintenance and problems that come with natural wood worksurfaces.



## MARBLE

Page: **18**

Our Marble collection has been curated to contain some of our boldest and most modern designs. Using **OMEGA** you can create the look of a high-end Italian kitchen at a fraction of the cost.



## STONE

Page: **26**

From modern industrial concrete to the natural magnificence of granite, **OMEGA** stone has a decor ideal for any kitchen.



## LUXE

Page: **34**

Our most innovative worksurfaces all available in a trendy 22mm thickness. Texture is key in our Luxe collection with either the incredible anti fingerprint, soft touch of our solid colours, or the astonishing brushed finish on our metallic decor.

**OMEGA**  
Scan the  
QR code to  
view the full  
range.



**ACCESSORIES** Page: **46**  
**ALLOY SPLASHBACKS** Page: **48**

# OMEGA FULL RANGE

## WOOD



Ashdown Oak



Natural Blocked Oak



Lanthwaite Oak



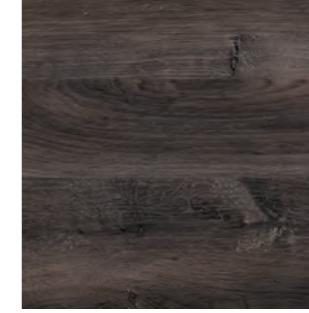
Warm Walnut Butcher Block



Croxdale Plank



Delamere Oak

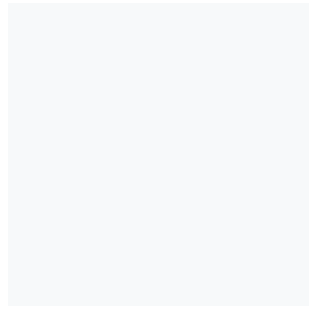


Galloway Oak



Grasmere Oak

## MARBLE



Pure White



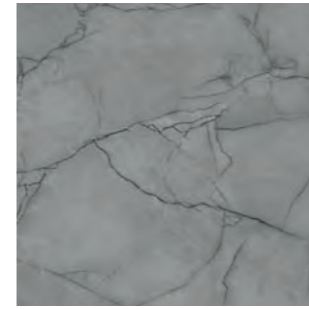
Paros Marble



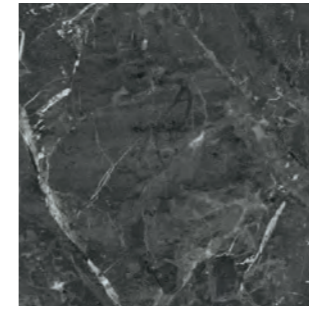
Tuscany Marble\*



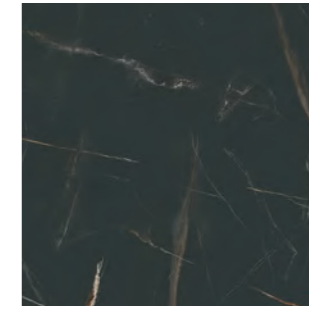
Picasso Marble\*



Emperador Marble\*



Marquina Marble

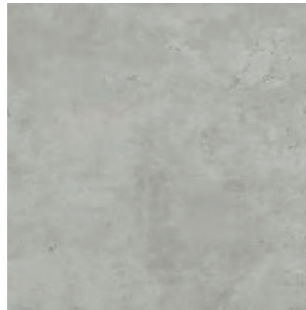


Laurent Marble\*

## STONE



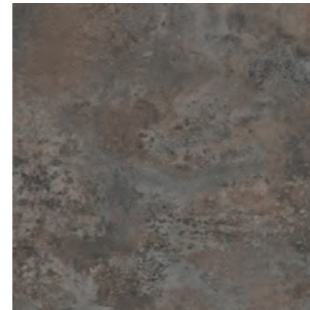
Dune Stone



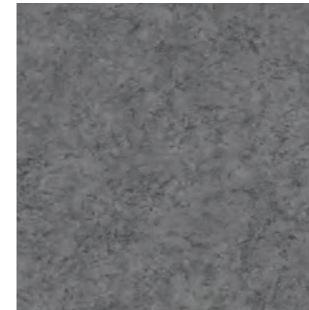
Light Portland



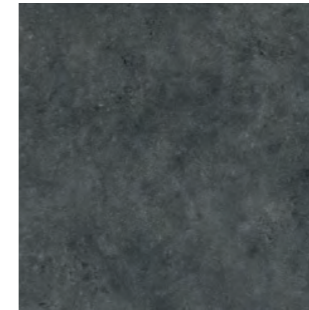
Salento Stone



Urban Caldeira

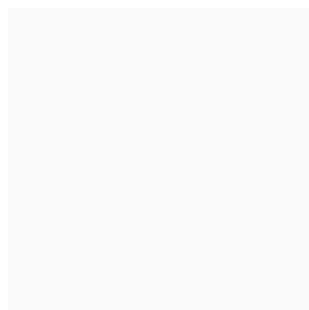


Lachen Stone



Brasilia

## LUXE



Vero Bianco\*\*



Anthracite Grey\*\*



Black Velvet\*\*



Brushed Bronze\*\*

All 38mm worksurfaces are available in either postformed or square edge.  
All 22mm worksurfaces are available with a square edge.

**\*Available in both 38mm and 22mm worksurfaces.**  
**\*\*Available as 22mm worksurfaces only.**



**OMEGA**  
samples.  
Scan the QR  
code to order  
for free.



## OMEGA WOOD

**OMEGA** Wood offers all the beauty and texture of stunning natural wood, but with none of the hassle of maintenance problems that come with natural wood worksurfaces.



The natural charm of wood is fully realised in this beautiful traditional kitchen. We love the contrast of the blue cabinets with our **Natural Blocked Oak** decor. The Ultramatt finish of the worktop and matching upstand only adds to the authentic wood effect.

At 38mm thick with a square edge, this worksurface has all the look and feel of a real wood countertop with none of the general upkeep associated with natural wood. An easy-to-clean **OMEGA** worksurface is designed for busy lives and busy kitchens.



**Natural Blocked Oak** Worktop & Upstand. 38mm thick, with a square edge.

**OMEGA WOOD**



1



3

**1.** Grasmere Oak worktop, 38mm thick with a postformed edge paired with Alloy Glacier White splashback.

**2.** Delamere Oak worktop, 38mm thick, with a square edge and matching splashback. Also shown is a Anthracite Grey worksurface, 22mm thick with a square edge.

**3.** Croxdale plank worktop and breakfast bar, 38mm thick, with a square edge. Completed with an Alloy Glacier White splashback.



2

**OMEGA WOOD**



# OMEGA WOOD

All 38mm worksurfaces are available in either postformed or square edge.

**OMEGA TEXTURES**  
Turn to page 41 to find out more.

We recommend ordering a sample before purchasing, as all images are representative.  
To order a sample please visit: [www.bushboard.co.uk/omega](http://www.bushboard.co.uk/omega)



**Ashdown Oak** Fibril 38mm



**Croxdale Plank** Fibril 38mm



**Natural Blocked Oak** Ultramatt 38mm



**Delamere Oak** Fibril 38mm



**Lanthwaite Oak** Fibril 38mm



**Galloway Oak** Fibril 38mm



**Warm Walnut Butcher Block** Ultramatt 38mm



**Grasmere Oak** Fibril 38mm



**OMEGA**  
samples.  
Scan the QR  
code to order  
for free.



## OMEGA MARBLE

Our Marble collection has been curated to contain some of our boldest and most modern designs. Using **OMEGA** you can create the look of a high-end Italian kitchen at a fraction of the cost.



**Laurent Marble** Worktop, Breakfast Bar & Splashback. 38mm thick, with a square edge.

**Laurent Marble** is the star of the show in this stunning high-design kitchen. Utilising a matching Worktop, Breakfast Bar and Splashback, this kitchen feels both moody and brilliantly bold. The ultramatt finish of the surface only adds to this uber-modern look and feel.

Shown here 38mm thick, **Laurent Marble** is also available in a modern, sleek 22mm thick worktop. Either thickness gives the effect of real high-end marble without the high expense and awkward installation that real marble entails.

**OMEGA MARBLE**



**1.** Tuscany Marble worktop, 22mm thick, with a square edge and matching splashback.

**2.** Emperador Marble worktop and breakfast bar, 38mm thick, with a square edge.

**3.** Pure White worktop, 38mm thick, with a square edge and matching splashback.

**4.** Marquina Marble worktop and breakfast bar, 38mm thick, with a square edge and matching splashback.

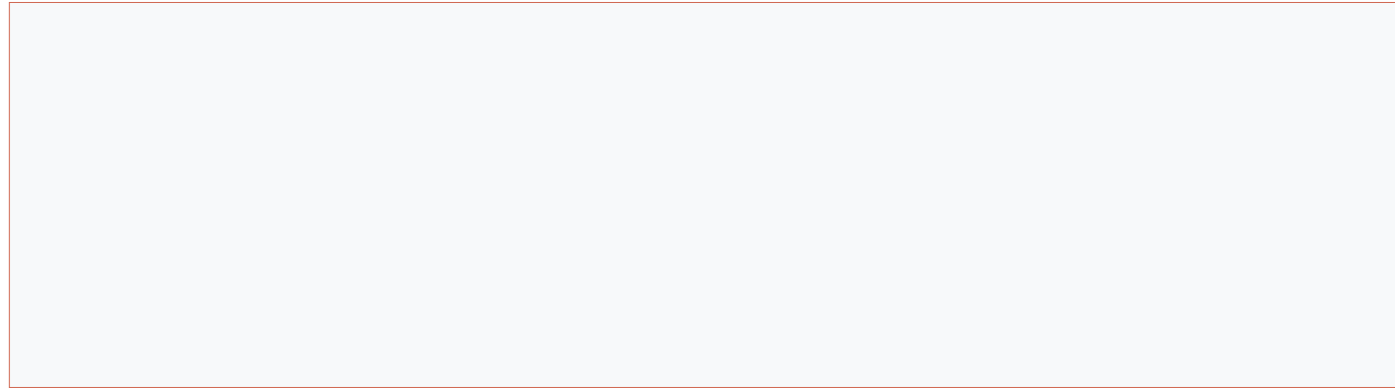


# OMEGA MARBLE

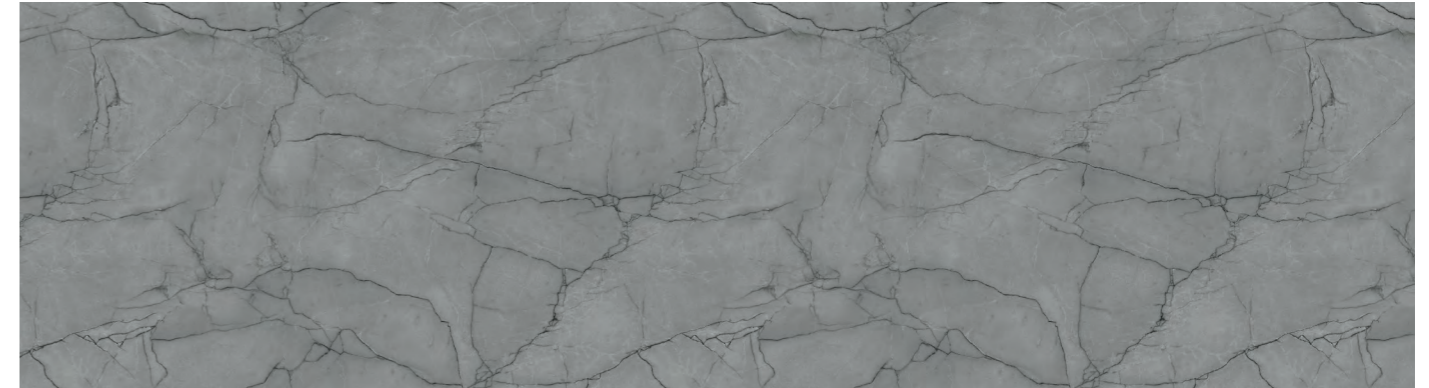
# OMEGA MARBLE

All 38mm worksurfaces are available in either postformed or square edge.  
All 22mm worksurfaces are available with a square edge.

We recommend ordering a sample before purchasing, as all images are representative.  
To order a sample please visit: [www.bushboard.co.uk/omega](http://www.bushboard.co.uk/omega)



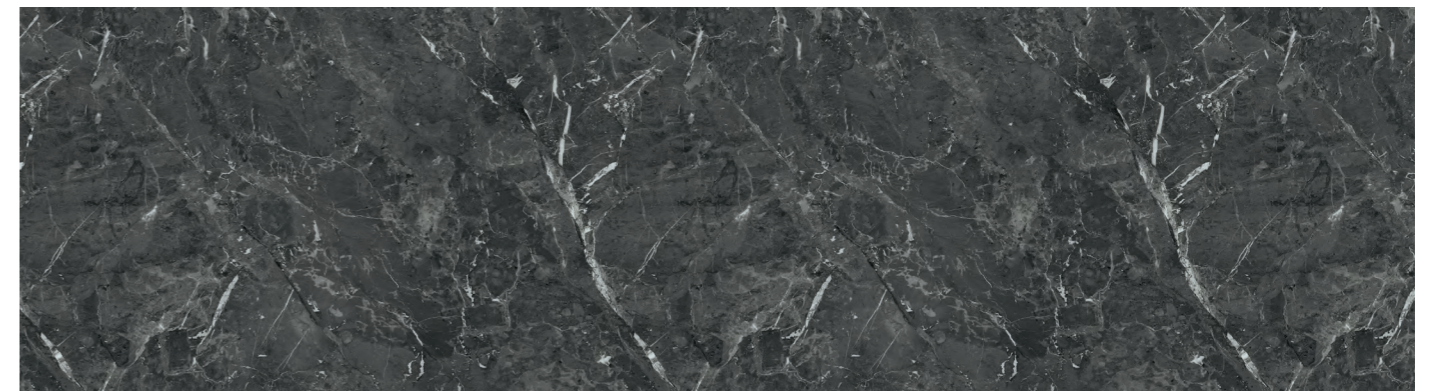
**Pure White Surf** 38mm



**Emperador Marble** Ultramatt Available in both 38mm and 22mm



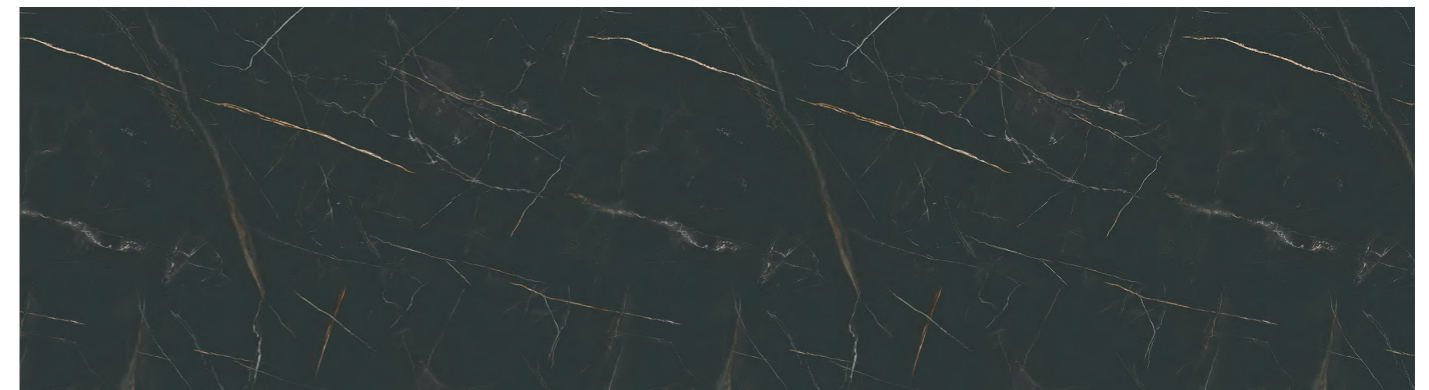
**Paros Marble** Ultramatt 38mm



**Marquina Marble** Roche 38mm



**Tuscany Marble** Eggshell Available in both 38mm and 22mm



**Laurent Marble** Ultramatt Available in both 38mm and 22mm



**Picasso Marble** Ultramatt Available in both 38mm and 22mm

**OMEGA TEXTURES**  
Please turn to page 41 to find out more.

**OMEGA** samples. Scan the QR code to order for free.





**OMEGA**  
samples.  
Scan the QR  
code to order  
for free.



# OMEGA **STONE**

From modern industrial concrete to the natural magnificence of granite, **OMEGA** stone has a decor ideal for any modern kitchen.



Demonstrating the look of real granite, **Lachen Stone**, with its ultramatt finish, can add a beautiful natural feeling of serenity to any space. Postformed edges, as shown here, are a great way to finish your work surface and further soften the overall look.

This kitchen truly demonstrates what **OMEGA** offers with the fantastic matching work surface, breakfast bar and splashback. Uniforming your design in this way is a great technique to make your kitchen really stand out.



**Lachen Stone** Worktop, Breakfast Bar & Splashback. 38mm thick, with a postformed edge.

**OMEGA STONE**



**1.** Urban Caldeira worktop, 38mm thick, with a square edge and Alloy Urban Steel splashback.

**2.** Brasilia worktop, 38mm thick, with a square edge and Alloy Viking Oak splashback

**3.** Lachen Stone worktop, 38mm thick, with a square edge.

**OMEGA STONE**



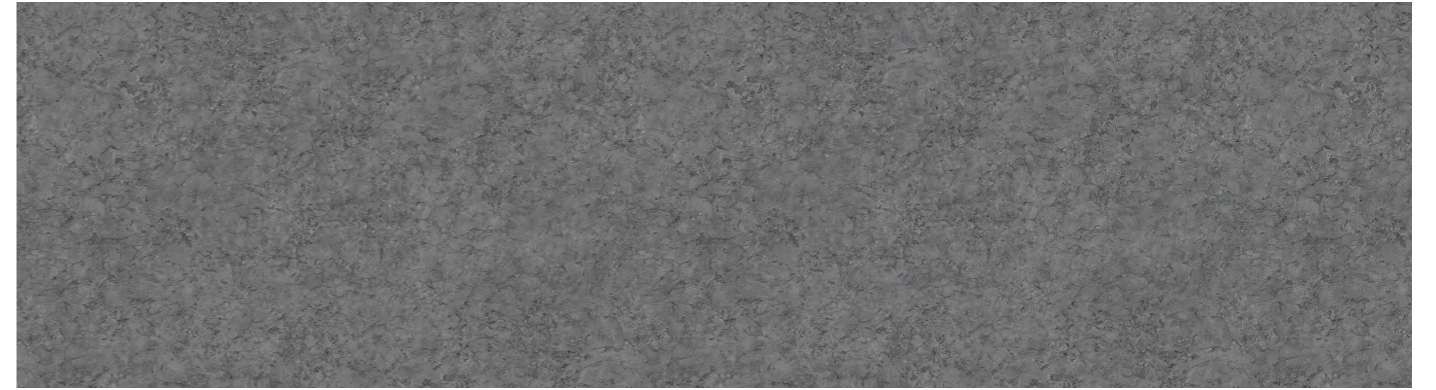
# OMEGA STONE

All 38mm worksurfaces are available in either postformed or square edge.

We recommend ordering a sample before purchasing, as all images are representative.  
To order a sample please visit: [www.bushboard.co.uk/omega](http://www.bushboard.co.uk/omega)



**Dune Stone** Ultramatt 38mm



**Lachen Stone** Ultramatt 38mm



**Light Portland** Granite 38mm



**Brasilia** Roche 38mm



**Salento Stone** Granite 38mm

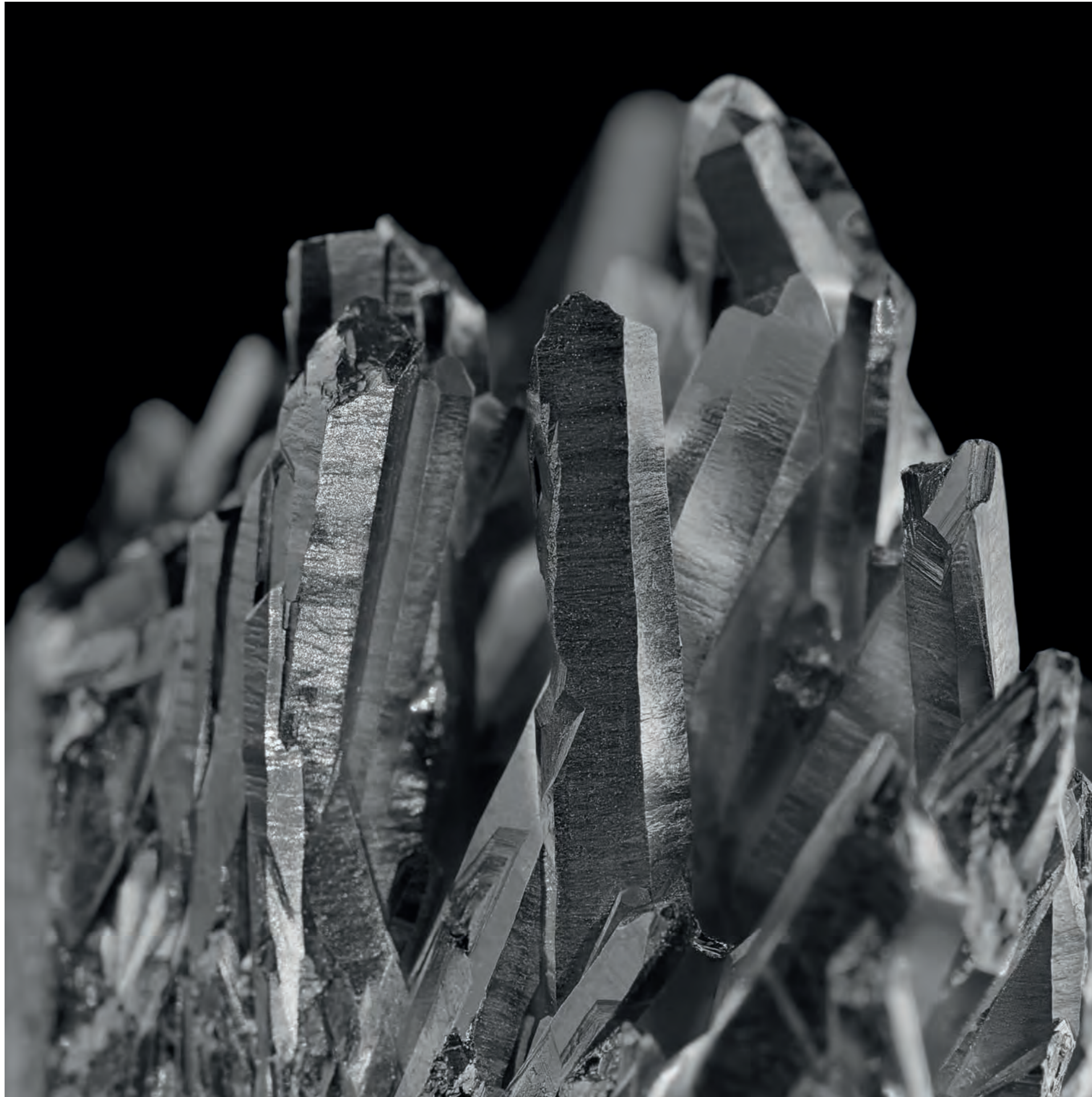


**Urban Caldeira** Fusion 38mm

**OMEGA TEXTURES**  
Please turn to page 41 to find out more.

**OMEGA** samples. Scan the QR code to order for free.





**OMEGA**  
samples.  
Scan the QR  
code to order  
for free.



## OMEGA **LUXE**

Our most innovative worksurfaces all in a trendy 22mm thick design. Texture is key in our Luxe collection with either the incredible soft touch of our solid colours, or the astonishing brushed finish on our metallic decor.



**Anthracite Grey** Worktop. 22mm thick, with a square edge. **Delamere Oak** Worktop & Splashback. 38mm thick, with a square edge.



Our new market-leading anti-fingerprint surface is demonstrated in this kitchen with the 22mm **Anthracite Grey** worktop. The velvety feel and deep matt finish of the surface create a modern look that is both subtle and breathtaking. An effect that really has to be seen to be believed.

We've contrasted the 22mm **Anthracite Grey** worktop with **Delamere Oak** in 38mm. Both decors are square-edged, adding an element of consistency, but mixing the thicknesses like this not only demonstrates what OMEGA has to offer, it quite simply looks fantastic.

**OMEGA LUXE**



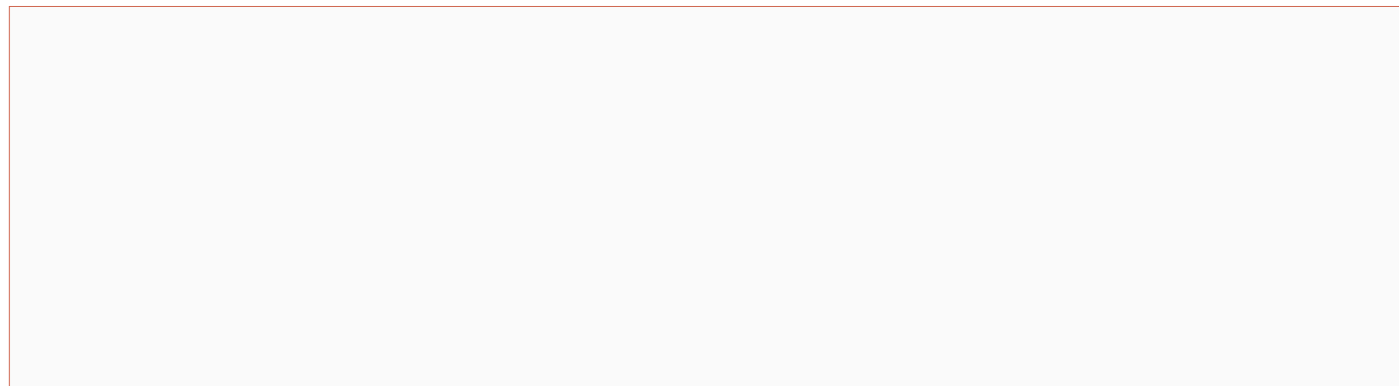
**1.** Black Velvet Breakfast Bar, 22mm thick, with 38mm Light Portland worksurface with a square edge.

**2.** Brushed Bronze worktop, 22mm thick with a square edge and matching splashback. Complemented by an Alloy Brushed Black Hob Panel.

**3.** Black Velvet worktop, 22mm thick, with a square edge. and matching upstand



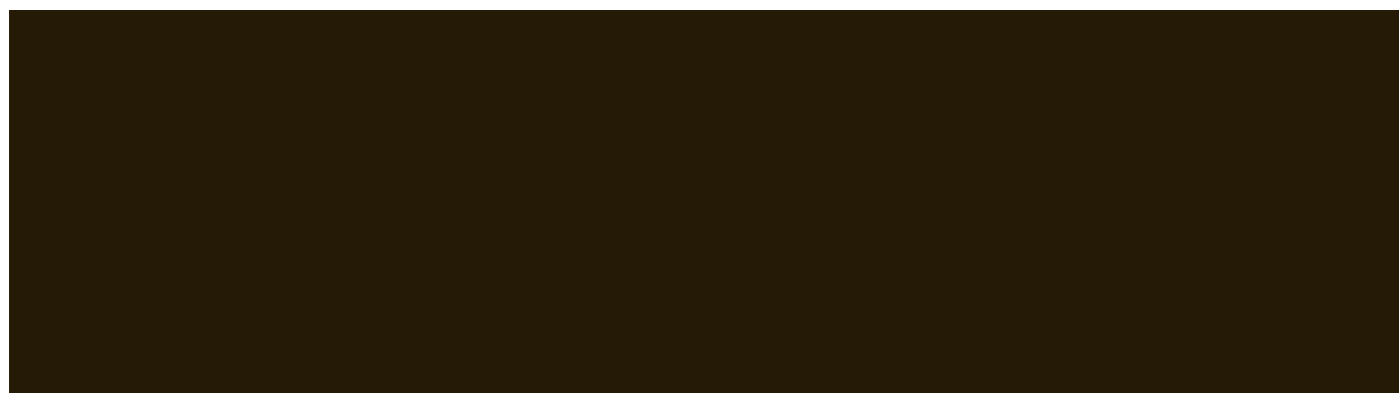
**OMEGA LUXE**



**Vero Bianco** Touch 22mm



**Anthracite Grey** Touch 22mm

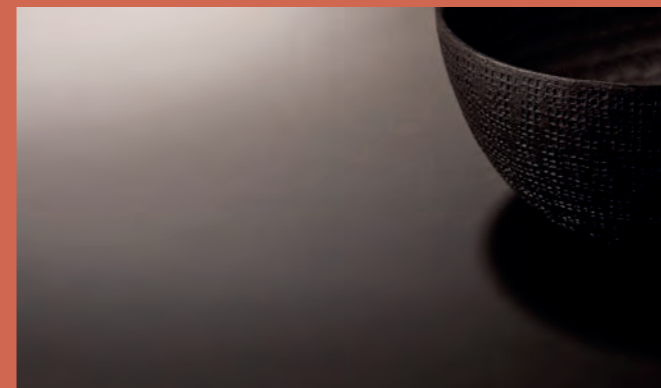


**Black Velvet** Touch 22mm



**Brushed Bronze** Brushed 22mm

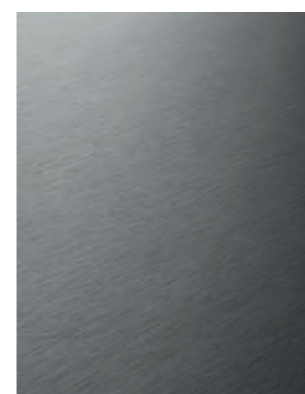
## TOUCH



Our premium anti-fingerprint surface has a velvety feel and deep matt finish which absorbs light creating a stunning result.

Touch is repairable thanks to its innovative technology meaning micro-scratches can be repaired with a melamine sponge.

- **Super-matt anti-fingerprint finish.**
- **Soft touch velvety feel.**
- **Shallow micro scratches can be repaired with the use of a melamine sponge.**



**Brushed**  
Offering a stunning metallic inspired finish, this texture emulates the realness of metal with small brushed strokes.



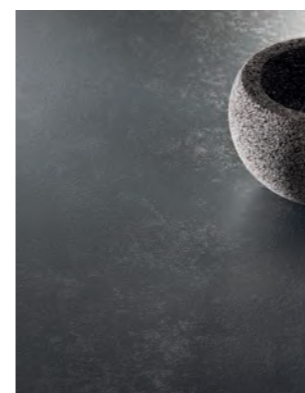
**Eggshell**  
A refined satin eggshell, soft to touch, radiating purity and discretion.



**Fibril**  
A polished wood effect that highlights the grain of the species and the authenticity of the decors with a natural matt texture.



**Fusion**  
A coarse matt surface with elements of gloss reflections which make the surface vibrate with oxidised reflections, patinated with vivid material and a corroded feel.



**Granite**  
Evoking natural stone and the feel of granite, underlaid by an uneven, subtle satin texture.



**Roche**  
An uneven texture with hints of natural stone or hammered metal combined with a matt finish that creates a surprising depth.



**Surf**  
A sensation of fine sand, granular to the touch giving an extra dimension to the decors.



**Ultramatt**  
Matt appearance with limited reflection.

# OMEGA PROFILES

Our unique range of decors have been created to keep it as simple as possible for you. Most decors are available in either a square edge finish or a postformed finish with a 38mm thickness. We also have 8 stunning decors available in a 22mm square edge.



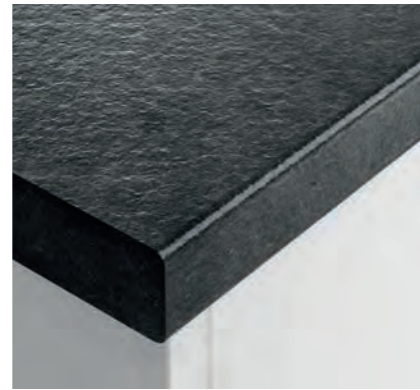
## 22mm SQUARE EDGED

The **Luxe** range of **OMEGA** is exclusively available as 22mm square edge. Plus 4 stunning decors from our **Marble** range.



## 38mm SQUARE EDGED

For a modern look finish your worktop with a square edge, offering a statement piece similar to solid surface.



## 38mm POSTFORMED

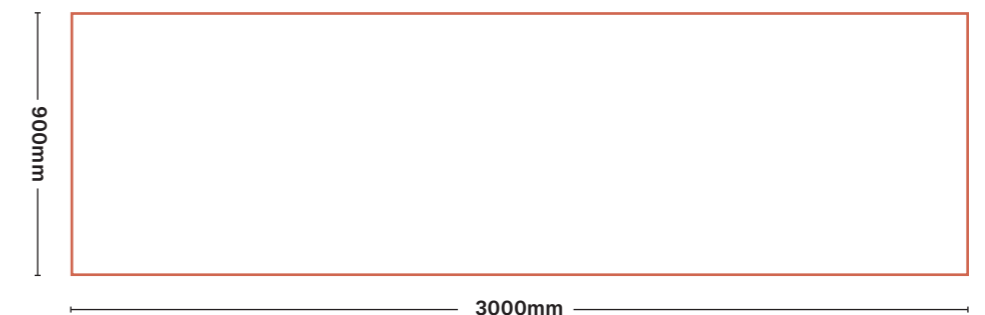
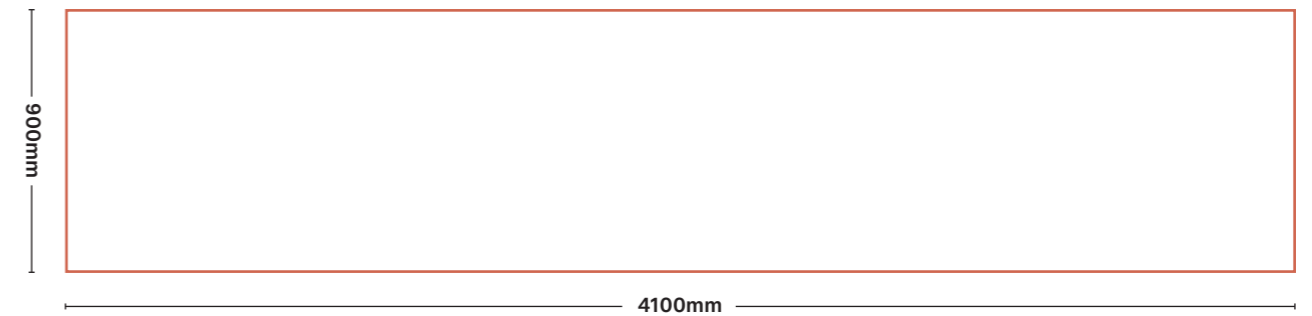
The more classic look, our postformed option finishes your worktop with a beautiful and subtle curved edge at a 3mm radius, see page 44 for availability chart.

# OMEGA SIZES

## WORKSURFACES



## BREAKFAST BARS



# OMEGA RANGE

OMEGA NAME	COMPLETE	TEXTURE	COLLECTION	22mm: Square Edge				38mm: Square Edge					38mm: Postformed					3000 x 600 x 8 Splashback	3000 x 100 x 20 Upstand
				4100 x 600 Worksurface	4100 x 900 Breakfast Bar	3000 x 600 Worksurface	3000 x 900 Breakfast Bar	4100 x 600 Worksurface	4100 x 665 Breakfast Bar	4100 x 900 Breakfast Bar	3000 x 600 Worksurface	3000 x 900 Breakfast Bar	4100 x 600 Worksurface	4100 x 665 Breakfast Bar	4100 x 900 Breakfast Bar	3000 x 600 Worksurface	3000 x 900 Breakfast Bar		
Anthracite Grey	Slate Grey	Touch	Luxe			●	●											●	●
Ashdown Oak	Oatmeal	Fibril	Wood					●	●	●	●	●	●	●	●	●	●	●	●
Black Velvet	Jet Black	Touch	Luxe			●	●											●	●
Brasilia	Basalt Grey	Roche	Stone					●	●	●	●	●	●	●	●	●	●	●	●
Brushed Bronze	Pewter Grey	Brushed	Luxe			●	●											●	●
Croxdale Plank	Oatmeal	Fibril	Wood					●	●	●	●	●	●	●	●	●	●	●	●
Delamere Oak	Mushroom	Fibril	Wood					●	●	●	●	●	●	●	●	●	●	●	●
Dune Stone	Fudge	Ultramatt	Stone					●	●	●	●	●	●	●	●	●	●	●	●
Emperador Marble	Basalt Grey	Ultramatt	Marble	●	●	●	●	●	●	●	●	●	●	●	●	●	●	●	●
Galloway Oak	Chocolate	Fibril	Wood					●	●	●	●	●	●	●	●	●	●	●	●
Grasmere Oak	Jet Black	Fibril	Wood					●	●	●	●	●	●	●	●	●	●	●	●
Lachen Stone	Slate Grey	Ultramatt	Stone					●	●	●	●	●	●	●	●	●	●	●	●
Lanthwaite Oak	Oatmeal	Fibril	Wood					●	●	●	●	●	●	●	●	●	●	●	●
Laurent Marble	Jet Black	Ultramatt	Marble	●	●	●	●	●	●	●	●	●	●	●	●	●	●	●	●
Light Portland	Silver Grey	Granite	Stone					●	●	●	●	●	●	●	●	●	●	●	●
Marquina Marble	Jet Black	Roche	Marble					●	●	●	●	●	●	●	●	●	●	●	●
Natural Blocked Oak	Oatmeal	Ultramatt	Wood					●	●	●	●	●	●	●	●	●	●	●	●
Paros Marble	Ice White	Ultramatt	Marble					●	●	●	●	●	●	●	●	●	●	●	●
Picasso Marble	Silver Grey	Ultramatt	Marble	●	●	●	●	●	●	●	●	●	●	●	●	●	●	●	●
Pure White	Ice White	Surf	Marble					●	●	●	●	●	●	●	●	●	●	●	●
Salento Stone	Basalt Grey	Granite	Stone					●	●	●	●	●	●	●	●	●	●	●	●
Tuscany Marble	Ice White	Eggshell	Marble	●	●	●	●	●	●	●	●	●	●	●	●	●	●	●	●
Urban Caldeira	Mushroom	Fusion	Stone					●	●	●	●	●	●	●	●	●	●	●	●
Vero Bianco	Ice White	Touch	Luxe			●	●											●	●
Warm Walnut Butcher Block	Fudge	Ultramatt	Wood					●	●	●	●	●	●	●	●	●	●	●	●

# OMEGA ACCESSORIES



## SPLASHBACKS

Splashbacks make a great style statement. Unlike wall tiles there is no messy installation or scrubbing grout clean. They go straight onto the wall in one smooth piece and fix in place with our Complete adhesive.

Affordable, hygienic and still looking fabulous in years to come, we have a stunning range to choose from. All worksurfaces are available with a matching splashback.



## UPSTANDS

Every worksurface in the **OMEGA** range is available with a matching upstand. Upstands continue the surface decor up the wall to protect paintwork and create a seamlessly elegant finish.

Upstands are sealed in place with Complete coloured adhesive for a perfectly co-ordinated finish.

## COMPLETE ADHESIVE AND SEALANT

We know the importance of the final installation, that's why we've developed Complete, our bespoke adhesive and sealant which should be used when installing your **OMEGA** worksurfaces.

### Exclusive 3 year joint guarantee

Use Complete for peace of mind and an exclusive 3 year joint guarantee.

Get the final installation right by asking your installer to use Complete, our bespoke adhesive and sealant.

Complete bonds and seals worksurfaces, upstands and splashbacks and is backed by our exclusive 3 year guarantee on joints, giving you superb performance at a modest price point.

Available in a wide choice of colours designed to complement our **OMEGA** surfaces, Complete will give you the perfect watertight result.

Full joint guarantee details are available on our website or from the Business Support Team.

Complete sealant is available in a range of colour options, either choose from our recommendation for your splashback or match to your worktop. The sealant colours in our matrix on page 44 are our suggestions, feel free to use any colour from the selection that you deem more suitable to coordinate with your chosen worksurface. It's flexible, super strong and will not shrink or breakdown like silicone.



Jet Black

Slate Grey

Basalt Grey

Pewter Grey

Silver Grey

Ice White

Oatmeal

Fudge

Mushroom

Chocolate



# Alloy™

## Splashbacks

Bring your dream kitchen design to life with a beautifully patterned splashback that fills the entire wall space behind your hob, without compromising safety.

With **Alloy**, say goodbye to tiles and hello to a high performance, statement splashback you can place wherever you want.

Your **Alloy** splashback is fire-safe behind any hob and waterproof behind any sink; with simple sizing and no need for an expensive glass cover, to break up your design with a stainless steel hob panel.

Just cut, fit and cook.

## What is an Alloy Splashback?

Until recently, simple wall tiles were the easiest and most popular way to protect kitchen walls from cooking splashes of grease or water.

Tiles, however, can be a real pain to clean and maintain over time. Tile grout gets mouldy and starts to look old really quickly.

A splashback is smooth, stylish and easy-to-clean solution to protect kitchen walls.

**Alloy** splashbacks are patterned or coloured aluminium splashbacks, crafted to give you complete design freedom all around the kitchen - even in the Hot Zone behind the hob, unlike other splashbacks.

**Alloy** is a fire-resistant aluminium composite panel, available in different variations & sizes with aluminium trims. **Alloy** can be used in combination for wall lining or as a kitchen splashback, in a wide variety of kitchen design layouts. The 4mm thick panel system is uniquely manufactured using a composite substrate and has excellent rigidity and toughness but is also lightweight, making **Alloy** easy to install, clean and maintain.



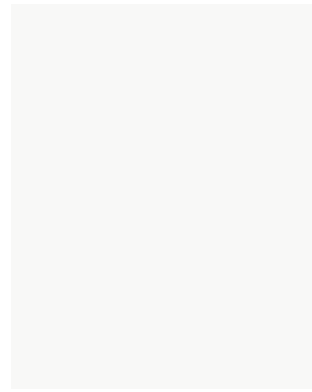
**Alloy.**  
Scan the QR  
code here  
to view the  
website.



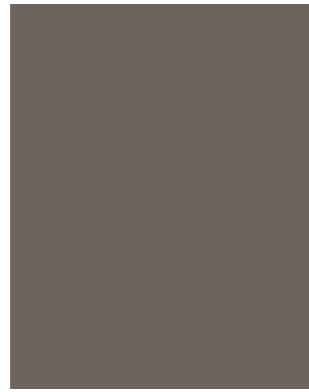
# Alloy Overview

Choose from 30 versatile Décor & Colour designs curated to bring your kitchen vision to life. The **Alloy** range has been inspired by modern kitchen trends, traditional tiles, geometric patterns and natural materials.

All designs available as:  
 Splashback: **3050 x 750 x 4mm**    Hob Panel: **600 x 800 x 4mm**  
 Splashback: **3050 x 600 x 4mm**    Hob Panel: **900 x 800 x 4mm**



Glacier White Gloss



Terra Grey Gloss



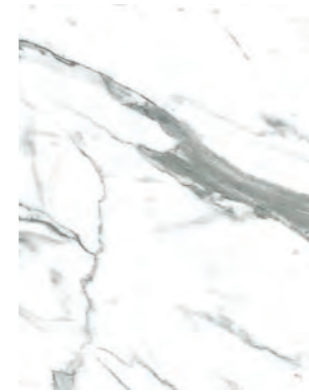
Malibu Grey Gloss



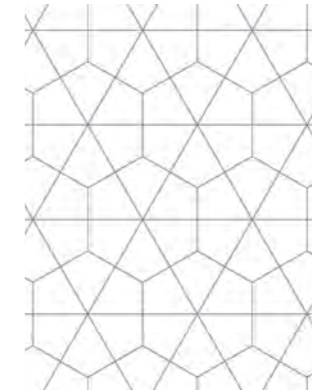
Smoked Rose Matt



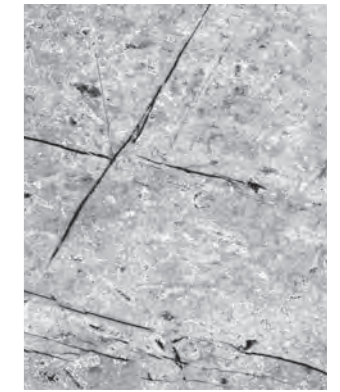
Carrara Marble Herringbone Shell



White Marble Shell



Geometry Shell



Fossil Marble Pietra



Deep Sea Blue Matt



Neptune Blue Gloss



Battleship Grey Matt



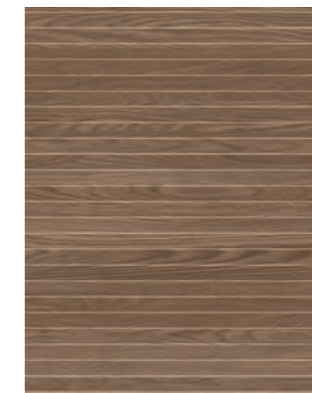
Storm Blue Gloss



Nordic Oak Timber



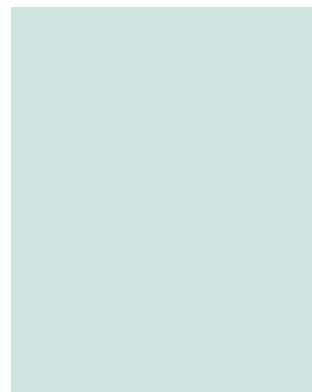
Viking Oak Timber



Fluted Oak Timber



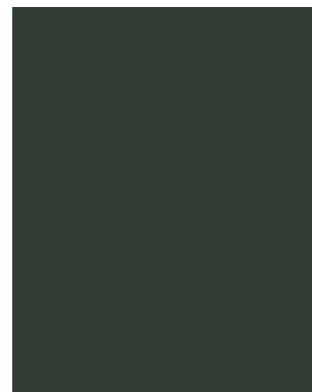
Heritage Walnut Shell



Seabreeze Green Gloss



Seafoam Green Matt



Hadrian Green Matt



Midnight Grey Matt



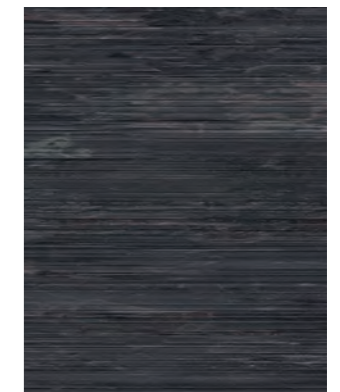
Concrete Chevron Timber



Urban Steel Pietra



Brooklyn Concrete Timber



Charred Cedar Timber



Brushed Steel Brushed



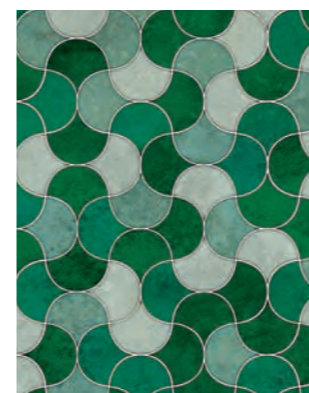
Brushed Titanium Brushed



Brushed Copper Brushed



Brushed Carbon Brushed




Emerald Scallop Pietra



Modern Victoria Shell

**Alloy samples.**  
 Scan the QR code to order for free.



# OMEGA

## ORDER SAMPLES

Order your free sample on the Bushboard website to get the true impact of Omega Worktops in real life.

We recommend ordering samples before ordering your product to ensure it's perfect for you.

[www.bushboard.co.uk](http://www.bushboard.co.uk)

## FIND A RETAILER

We have thousands of retail partners in the UK who proudly stock our products.

Experts there can give you advice on design and installation as you explore the full range of Omega samples in store.

[www.bushboard.co.uk](http://www.bushboard.co.uk)

## LIFETIME GUARANTEE

Bushboard **OMEGA** worksurfaces are guaranteed for their lifetime. Bushboard will make good by repair and/or replacement (at its discretion) any Omega product of its manufacture which can be shown to have failed by reason of defects in its manufacture, subject to fair wear and tear, provided the product has been installed and used in accordance with the manufacturer's instructions and that the products are used for their intended purpose. Proof of date and place of purchase required. This guarantee is in addition to your statutory rights as a consumer and does not affect your rights in any way.



[www.bushboard.co.uk](http://www.bushboard.co.uk)  
tel: 01933 232 272  
email: [businesssupport@bushboard.co.uk](mailto:businesssupport@bushboard.co.uk)

**BB**  
**BUSHBOARD**

# OTHER PRODUCTS



**Alloy**<sup>™</sup>  
Splashbacks

Bring your dream kitchen design to life with a beautifully patterned or coloured splashback that fills the entire wall space behind your hob, without compromising safety.

With Alloy, say goodbye to tiles and hello to a high performance, statement splashback you can place wherever you want.



**ZENITH**

Super hardwearing and thin, Zenith is the perfect alternative to stone offering a solid surface worktop with a sleek 12.5mm thickness.



**BB options**

Our range of classic worktops, available in 38mm and 28mm postformed, with 40 stunning designs to choose from.

